

CT DEEP **2017**
FISHING REPORT NUMBER 23
9/14/2017



Porgy AKA Scup (*Stenotomus chryops*)



YOU CAN FIND US DIRECTLY ON FACEBOOK. This page features a variety of information on fishing, hunting, and wildlife watching in Connecticut. The address is www.facebook.com/CTFishandWildlife.

SHARE THE EXPERIENCE
Take someone fishing

INLAND REPORT

Fall TROUT Stocking- Trout stocking is scheduled to begin in earnest soon (week of September 18) but is dependent on temperatures. Stay up to date with our daily stocking post on [Facebook](#), our [interactive trout stocking map](#), and our [stocking report](#).

LARGEMOUTH BASS fishing is reported as very good. Places where the largemouth are eager to bite include West Hill Pond, East Twin Lake, Gardner Lake, Pickerel Lake, Beseck Lake, Amos Lake, Beach Pond, Highland Lake, Seymour Reservoir #4, Crystal Lake, Mudge Pond, West Side Pond, Tyler Lake, Mansfield Hollow Reservoir, Dog Pond, Hatch Pond, Park Pond, Lake Wononskopomuc, Lake Saltonstall, Bishop Swamp, Winchester Lake, Congamond Lakes, Quinebaug Lake, Black Pond (Meriden), Burr Pond, Griggs Pond, Anderson Pond, Billings Lake, Moodus Reservoir, Aspinook Pond, Babcock Pond, Pachaug Pond, Lake Hayward, Quonnapaug Lake, Rogers Lake and Stillwater Pond.

Tournament angler reports are from Ashland Pond (fair, not much size, average fish weight was a bit over 1-lb apiece, with a 2.06 lb lunker), Hopeville Pond (good, 4.76 lb lunker), Pattagansett Lake (fair to good, with a 4.66 lb lunker for one club, slow for a second club, with a 3.98 lb lunker), and Wononskopomuc Lake (good for some and slow for some, lots of pickerel, 3.56 lb lunker).

SMALLMOUTH BASS. Catches reported from Candlewood Lake, Housatonic River (Upper), Naugatuck River, Lake McDonough, Lake Zoar and Lake Lillinonah. Housatonic River smallmouth fishing has been good.

CARP are still fairly active. Productive fishing in CT River, West Thompson Reservoir, Union Pond, Lake Zoar, and Aspinook Pond.

KOKANEE SALMON are slow, with a few reports.

NORTHERN PIKE. A handful of catches reported – Bantam Lake and Lake Lillinonah were best bets. Other places to fish include Winchester Lake, Pachaug Pond, and the Connecticut River and its coves (Hartford to Haddam).

Connecticut Hunting & Fishing Day
Saturday **September 23** 10AM to 4PM

- Hunting & Trapping Tips
- Fishing & Boating Displays
- Archery Shooting
- Fly-tying and Casting
- Hunting & Fishing Clubs
- Conservation Organizations
- Birds of Prey
- Kid's Activities
- Fish & Wildlife Exhibits
- Equipment Vendors
- Laser shot, Dart gun, Blow pipe
- BB Gun Shooting Range
- Hunting Dog Demonstrations

- NEW LOCATION -
In association with **Cabela's**
475 East Hartford Blvd N.
East Hartford, CT
Admission and all activities are **FREE!**

Connecticut Department of Energy and Environmental Protection
www.ct.gov/deep/HuntFishDay
860-424-3011; deep.ctwildlife@ct.gov

WALLEYE No reports this week from anglers. Look for Walleye in the evening or early morning along steep drops in Mount Tom, Saugatuck Reservoir. Squantz Pond, Batterson Park Pond, Beach Pond, Cedar Lake, West Thompson Lake, Gardner Lake, or Mashapaug Lake.

CATFISH – fishing remains solid in many of our [Catfish Management Lakes](#) and several [Community Fishing Waters](#). Try cut fish or live shiners to entice a cat to bite.

PANFISH are still a great bet. Perfect for family fun along the shoreline of a small pond. Check out the “panfish” map in our new application “[CT is Fishy](#)” to find a new place to fish close to you.

FALLFISH (DACE) are the largest native minnow and can reach over 15 inches (typically 8-12 inches). Fallfish provide excellent action on ultra-light tackle and fly rods. The fish are aggressive and will hit a variety of natural and artificial baits (use the same gear you would for trout). Fishing for Fallfish is a great way to spend time on a river.

Good Fallfish waters include the Willimantic River, Shetucket River, Natchaug River, Lower Farmington River (Avon-Windsor), Housatonic River (Cornwall to Kent), Scantic River (Somers to East Windsor), and Yantic River. The current [state record](#) Fallfish (2.25 pounds) was taken in 2012 by Chad Tessman.

TROUT-LAKES & PONDS – Most lakes remain poor to fair. Best bets are to hit the traditional deep cold lakes like; East Twin Lake, West Branch Reservoir, Long Pond, Crystal Lake, or Highland Lake.

TROUT- RIVERS & STREAMS. Conditions for trout fishing remain good and will improve with the forthcoming fall stocking. Flows are very fishable - *see stream flow graphic on page 3.*

Farmington River – Fishing remains very good. Last week’s collection of broodstock for the “Survivor” program went well with just over 90 fish selected. Check out the archived “Facebook Live” footage on [CTFishandWildlife](#) to see some of the beautiful browns we observed. The West Branch flows are clear and should be steady through the weekend (currently 207 CFS at Riverton, with the Still River at 21 CFS) and morning water temperatures ranging from the mid to upper 50’s °F below the dam to the mid 60’s °F through New Hartford.

Hatches/patterns shifting to the fall patterns with good numbers of flying ants (recent afternoons) and black caddis. Other perennial favorites include *Isonychia bicolor* (#10-14, fast water, evening), Tricos (#24), Blue Wing Olives (*Drunella* sps. & *Baetis* sps.; #18, 20-24, mid-late afternoon), Cahills/Summer (*Stenonema ithaca*, #12-14, evenings), Caddis (tan #16-18, all day; green #22-26, evening; summer pupa #18-20 morning), Midges (#22-32, morning), Black Ants (#14-20, mid-day in fast water), Black Beetles (#14-18, mid-day), and Stone Hopper (#8-14, mid-day) are successful patterns. Try a “muddler minnow” to trigger that big ‘bow into hitting your line.

Housatonic River – Fishing has been very good and conditions for the weekend should be. Flows are perfect for that day on the river (currently 279 CFS at Falls Village and 440 CFS at Gaylordsville). Morning water temperatures are in the upper 60’s.

Hatches/patterns include a good diversity of insects with just about everything happening at one point in the day or another. Patterns to try include White Zonkers, Woolly Buggers (go big- larval dobsonflies can be up to 4” in length and are a favorite food item), Muddlers, Grey or Black Ghosts (#4-10). Other insects include flying

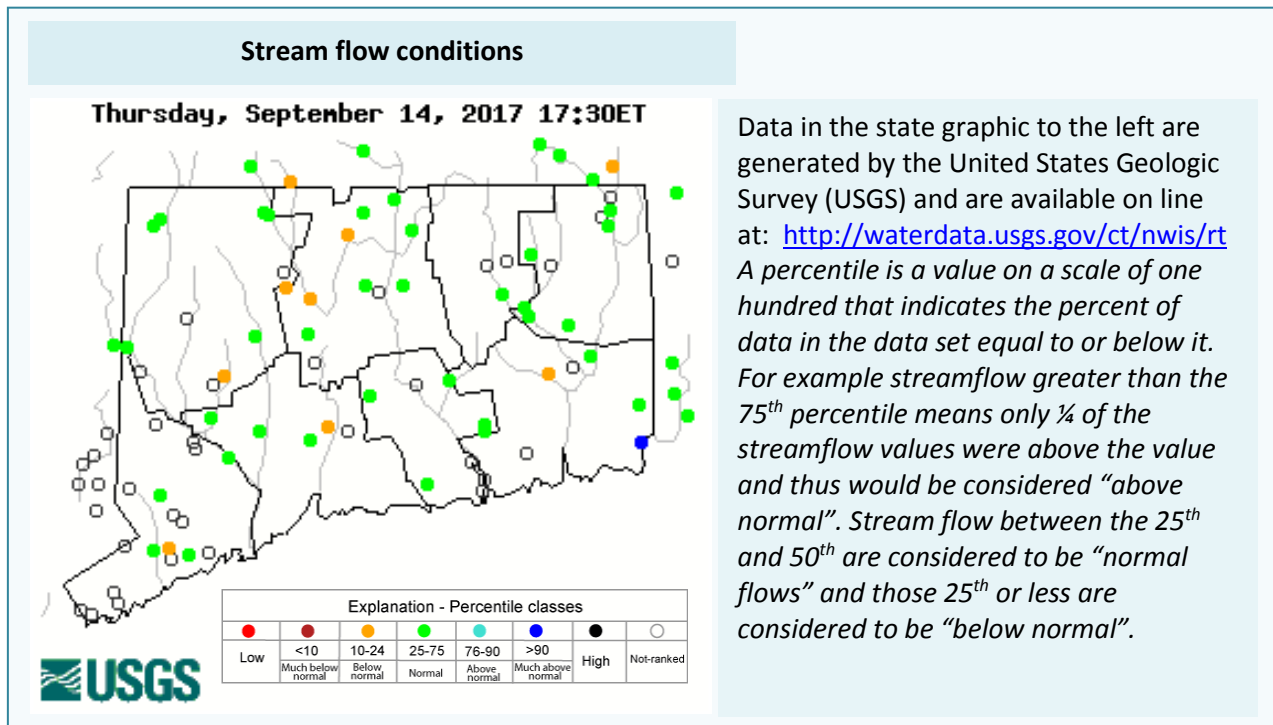
SAVE THE DATE
Connecticut Hunting & Fishing Day
Saturday, September 23, 2017.
10 am-4 pm
CABELA’s, East Hartford
Get all of the details at
www.ct.gov/deep/huntfishday

ants (#14-16, mid-day, when windy/humid, September is peak month), Fall Sulfurs (#16-18), Blue Wing Olives (#18-22), Tricos (#20-22), Leadwing Coachman (#10-12 evening, September is peak month), Sulfurs duns (#16-18, below the dam due to low temperatures, morning; afternoon to early evening for spinners), Light Cahill (#14-18, early morning & evening). Golden stonefly nymphs hatch at first light and adults egg-lay after dark.

Streamer fishing and nymphing with big stoneflies is usually productive. Streamer patterns to try include White Zonkers, Woolly Buggers (#2-12), Muddlers, Lion Buggers, and Grey or Black Ghosts (#4-10). Light Cahill (#12-14, evening), Isonychia (#10-12), Sulfur (#16-18) and Black caddis (#14-18, early morning & evening). Don't forget poppers and streamers for some big trout as they head out from the thermal refuges.

CONNECTICUT RIVER

BLACK CRAPPIE action is improving in the coves up and down the river. Target the backwaters with small shiners. **SMALLMOUTH BASS** (some fish up to 4 lbs) are providing action in the river both above Hartford and downstream. **NORTHERN PIKE** fishing is reported as good in the main stem and coves. Fish have been caught from the Hartford area downstream to Chapman Pond. **LARGEMOUTH BASS** are being caught (but you have to work for them) in the Hartford to Haddam area. **CARP** are providing action in coves and in the mainstem. (Hartford to Middletown area). **BOWFIN** can be found in backwater areas with dense weeds.



LAKE & POND BATHYMETRIC MAPS

Bathymetric maps of many of Connecticut’s public access lakes and ponds can be found online at:

www.ct.gov/deep/lib/deep/fishing/general_information/lakebathymetrymaps.pdf

Both plain line maps and maps overlaying an aerial photo available.

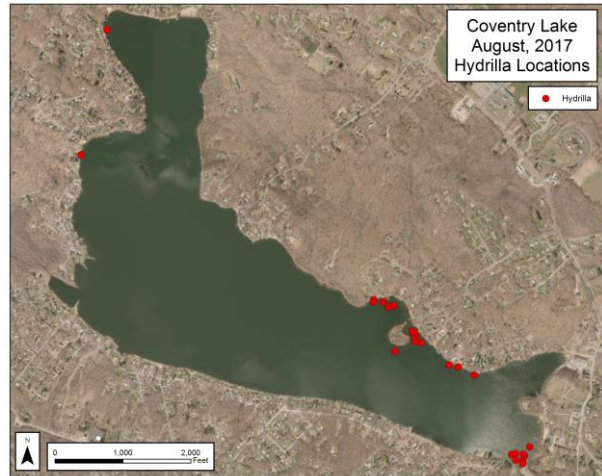


NOTES & NOTICES:

CONNECTICUT RIVER (invasive species alert). Hydrilla was recently found in the main stem Connecticut River in Glastonbury (near Glastonbury's Riverfront Park & Boathouse). See the Coventry Lake entry below for what river users should do to prevent spread of this invasive plant to other waterbodies.

COVENTRY LAKE (invasive species alert). Hydrilla, a very highly invasive aquatic plant, has been found growing in Coventry Lake. All lake users should take extra care to check and clean their boats (including canoes, kayaks and rowing sculls), trailers, and fishing equipment before leaving the boat launch, or leaving the lakeshore.

RAINBOW RESERVOIR (drawdown). Refill has begun following a 15 foot drawdown to facilitate dam maintenance.



Coventry Lake (Wangumbaug Lake) boaters should avoid the areas noted with red dots to avoid fragmenting and spreading hydrilla.

PHOTO CONTEST: Do you have the next Angler's Guide cover shot? Email us your high quality (high resolution) photos **by November 1** to Deep.inland.fisheries@ct.gov and include [photo contest](#) in the subject line.

CT FISHIN' TIPS is our monthly e-newsletter dedicated to providing information, tips and pointers about fishing in Connecticut. Get CT Fishin' Tips delivered automatically to your in box by subscribing at www.ct.gov/deep/newslettersubscription

NEW! Youth Fishing Passport [Fishing Challenge Scorecard](#): Download the new scorecard for your Youth Fishing Passport Holder on the program web page at www.ct.gov/deep/yfp. Top anglers will receive a great prize pack of fishing gear.

"Connecticut is Fishy!" a new interactive fishing resource for novice and expert alike. The link is on our main page at www.ct.gov/deep/fishing or hit it directly at <http://ctdeep.maps.arcgis.com/apps/MapJournal/index.html?appid=a17906f58b594e118555d48bf999b51c>

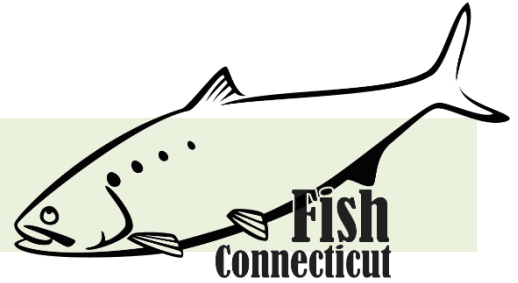
We are fortunate that within a 60 minute drive you can be fly fishing the famed Housatonic or Farmington River, catching monster pike in Bantam Lake, jumbo carp from the Connecticut River, or on the Sound fishing for tasty favorites like fluke, porgy, black sea bass, striped bass and bluefish.

This NEW interactive application has lots of great information, including maps and links, providing all you need to know about Connecticut's fisheries.

Give it a spin and let us know what you think!



MARINE FISHING REPORT



Surface water temperatures in Long Island Sound (LIS) are in the low to mid 70's °F. Check out the following web sites for more detailed water temperatures and marine boating conditions:

<http://www.mysound.uconn.edu/stationstat.html>

http://marine.rutgers.edu/mrs/sat_data/?nothumbs=1

<http://www.ndbc.noaa.gov/>

<http://www.wunderground.com/MAR/AN/330.html>

Connecticut State Boundary Line in Long Island Sound. Anglers please note: Though Connecticut has reciprocity with neighboring states (New York, Rhode Island, Maine and Massachusetts), residents of Connecticut are required to have a CT Resident Marine Waters Sport Fishing License to fish in the Marine District.

WHALES have been reported in Long Island Sound (in early July, juvenile humpback whales have been spotted on the New York side of the sound), please see check [WHALE WATCHING GUIDELINES](#).

Note: All marine mammals are protected by the Federal Marine Mammal Protection Act. Following these recommended operational guidelines helps minimize chances of harassing or injuring whales and violating Federal law. Guidelines apply to all large whales from Maine through Virginia, except North Atlantic right whales. It is illegal to approach a right whale within 500 yards (1500 feet) unless granted specific exemption or authorization.

SEA TURTLES: [See a Tangled Turtle? Call the Hotline!](#) 1-860-572-5955 ext. 107. This is the time of year when leatherback, loggerhead, green, and Kemp's ridley sea turtles return to northern waters, with many sightings around Long Island Sound.

ATLANTIC BONITO & LITTLE TUNNY fishing is very good along with the weather. These small tunas are cruising around from Newport, Pt. Judith, Watch Hill to Pine Island (including Fishers Island Sound), and the Race to Little Gull Island, from Bartlett Reef, **Niantic Bay, Millstone Outflow** to Black Point and west to New Haven. **Try casting metal (heavy) lures to feeding fish on the surface. A quiet approach and finding birds (gulls/terns) actively feeding is the key to a successful trip.**

STRIPED BASS remains very good at night. Hook up with a charter boat and learn how to catch those "cow" bass. Seems some striped bass are not ready for the summer to end and the larger ones have been moving back into shore - especially off the rocks at Rye, New York's Playland (filming location of the Tom Hanks film "Big"). "Schoolie" stripers are still active. "Rockfish" as they are called in the South eastern states are feeding on both artificial lures and bait. **Schoolies and bigger holdovers are plentiful in Norwalk Harbor in front of Norwalk Aquariums Enhanced Opportunity Shore Fishing Pier.** There are consistent reports of large stripers shaking their heads while fighting at the end of an anglers line this week from Greenwich to New Haven.

Don't forget to join us on CT Fish and Wildlife via Facebook at; <https://m.facebook.com/CTFishAndWildlife>

Other striper spots include the Watch Hill reefs, Ram Island Reef in Fishers Island Sound, lower Mystic and Thames River, the Race, Sluiceway, **Plum Gut**, Pigeon Rip, outer Bartlett Reef, Black Point, the "humps" south of Hatchett Reef, lower Connecticut River, Long Sand Shoal, Cornfield Point, Southwest Reef (outer), Sixmile

Reef, Falkner Island area, the reefs off Branford, New Haven Harbor (breakwalls) and the upper reaches, Charles Island area, lower Housatonic River, buoys 18 and 20 off Stratford Point, Stratford Shoal/Middle Ground, Milford Point, Penfield Reef, around the Norwalk Islands, and Cable and Anchor Reef.

SUMMER FLOUNDER (fluke) fishing is getting better as fall approaches (*season closes September 21*). Summer flounder fishing has been a little hit or miss but those fortunate enough to catch them this week were frequently bouncing a bucktail tipped with squid. They are feeding heavily prior to their migration south for the fall/winter. Summer flounder (fluke) in the 19" range are being reeled in at **Silver Sands and Gulf Beach**, as well as **Todds Point in Greenwich, Milford's Anchor Beach** and **Hickory Bluff Bridge** in the Rowayton section of Norwalk. Fishermen are reporting some very large doormat fluke being caught (10 lbs 4 ozs, western Sound). Live lining snapper blues in deep water (80 to 100') is the preferred method by fluke sharpies in the fall. **Minimum size is 19 inches and the daily creel limit is 3 fish per person.** [CT Bait & Tackleshop List](#)

BLACK SEA BASS fishing has been very consistent in the Sound. Black Sea Bass are still hitting high-low rigs baited with clam and squid. **Calf Pasture Beach Pier, Green can "C" off of Stratford Shoal Lighthouse, South Benson Pier and Ash Creek, Seaside Park, Saint Mary's by the Sea and Fort Nathan Hale** have all been holding black sea bass. My recommendation to plan a trip on a [party/charter boat](#) trip to fish off of Block Island...there are many giant-sized sea bass (4-7.5 lbs) out there. Eastern Sound (Fishers Island to Block Island and northeast of Montauk) anglers are having better success. Closer to home, the rocky reefs from Niantic, to Branford (Falkner Island) have been consistent all season. A reminder to all anglers...if you are fishing in water deeper than 100', barotrauma can cause released fish to struggle to make it back to the bottom. A descending device such as the Shelton Fish Descender can help assist the sea bass air bladder to recompress and get safely back down to the depths. See [Fishsmart.org](#) for more information.

SCUP (porgy) fishing is phenomenal. Porgy fishing has been one of the 2017 superstars and you can find them almost anywhere. There are keepers at **Calf Pasture Pier, Sherwood Island State Park, South Benson Pier, Silver Sands State Park, Fort Nathan Hale, Stratford Wall, Short Beach in Stratford, Gulf Beach breakwater, Green can "C" off of Stratford Shoal Lighthouse**, the Lighthouse itself. Let's just say if you use a high-low rig tipped with clam and squid you are likely to catch a keeper scup for dinner. Try Gardner's Island, Milford (Charles Island), Montauk and Niantic (Bartletts and Hatchetts Reef). Very accessible shore fishing locations: Calf Pasture beach, Jennings and Penfield beach, Seaside Park, (Milford), Bradley Point Park (West Haven), New Haven, **Harkness State Park**, Rocky Neck State Park, **Kimberley Reef (Guilford)**, Meigs Point Hammonasset State Park and **Fort Trumbull State Park**. Locate your favorite [Enhanced Shore Fishing Opportunities](#) for these hard fighting and excellent eating "Reef Slammers". These "panfish of the sea" are easily caught on sandworms/cut squid or any other small piece of bait. Contact your [local bait and tackleshop](#) for updated fishing information.

BLUEFISH schools are now scattered throughout the western Sound and are hitting anything that swims in the water. As the cooler water triggers bluefish to fatten up before their migration south - the fighting action is intensifying dramatically. Many in the 8-17 pound class are biting in the evening and these "alligator-sized" blues seem to be moving in shore during the evening for those shore anglers to enjoy. Bluefish hot spots this week are mouth of **Black Rock Harbor, Pennfield Reef, Southport Harbor, Seaside Park, Sherwood Island State Park, mouth of Norwalk River (between Sherwood Island and Manressa Power Plant** - that large sky blue building with smoke stacks), along with Stamford Harbor and Todd's Point on the Western side. Adult bluefish have been preferring poppers over bait this week and feeding in relatively shallow water.

SNAPPER bluefish aka juvenile bluefish fishing is still very good inshore and I highly recommend visiting the many Enhanced Opportunity Shore Fishing sites including: **Norwalk Maritime Aquarium pier, Calf Pasture Beach Pier, Pleasure Beach Family Pier, South Benson Beach Pier and Gulf Beach Pier.**

BLACKFISH (TAUTOG) CLOSED until October 10, 2017

STRIPED SEAROBIN fishing continues to be steady for this “hardhead fish with spines and large pectoral fins”. Also, called “**Poor-Man’s Lobster**”, these fish are very common especially when bottom fishing at many of Connecticut’s shore fishing sites. With fish measuring over 22 inches and “barking up a storm” (grunting noise they make when handling them). They love sandworms, squid and any live or dead bait. They are also very good to eat. There are videos on how to clean/fillet these tasty eating fish.

HICKORY SHAD fishing is good in the Black Hall River/**Lieutenant River**, Housatonic River and the lower Connecticut River (DEEP Marine Headquarters fishing pier). Fishing remains good at Fort Trumbull, Black Hall, Clinton Harbor River systems and the lower Connecticut River (DEEP Marine Headquarters fishing pier). Both snappers and hickory shad can be found schooling together at these locations.

WEAKFISH Exciting news from the western Sound as keeper-sized weakfish have been seen and reported from the New York line to New Haven. The hottest spots to catch weakfish this week include Buoy 18, Sunken Island and Execution Rock. Weakfish is surprisingly good in the central and western Sound.

NORTHERN KINGFISH fishing has been very good. Many reports this month from the western Sound including **Walnut Beach** and **Sandy Point**. **Kingfish are found along hard sand bottom and frequent shallow water. Excellent fishing for the shore angler along with being excellent eating.** If you play your cards right you might catch one of these beauties - great bragging rights.

BLUE CRAB is good in most tidal creeks and bays. Many of the large Jimmies (male crabs) have moved upstream. Incoming tide has produced better crab fishing as the crabs migrate into the shallow water to feed. **Remember, all egg bearing females must be released without avoidable injury. Minimum carapace length is 5 inches for a hard shell crab.** Legal gear types include scoop (dip) net, hand line, star crab trap, circular (topless) trap not exceeding 26 inches in diameter. Maryland style crab traps are prohibited. **Chicken with the skin on it (along with a long handle dip net) and a small circular crab trap is the preferred method to capture these tasty crabs.** [Blue Crab Fact Sheet](#) Angler’s please also note: It is illegal to snag blue crabs.

NOTABLE CATCHES –

| Species | Length (in.) | Weight (lb) | Angler |
|----------------|--------------|-------------|--------------|
| Scup | 18.25” | C&R | Evan Kamden |
| Fluke | 34.25” | 14 lbs | Wayne Carney |
| Black Sea Bass | 23” | 4.4 lbs | James Marino |

For Current Connecticut Recreational Fishing Regulations: Anglers should consult the 2017 Connecticut Anglers Guide which is now available at most Town Clerks Offices, DEEP offices and at tackle stores selling fishing licenses. Current regulations, electronic versions of the Angler’s Guide and additional information is on the DEEP website at: www.ct.gov/deep/fishing.

The Connecticut Department of Energy and Environmental Protection is an Affirmative Action/Equal Opportunity Employer that is committed to complying with the requirements of the Americans with Disabilities Act. Please contact us at (860) 418-5910 or deep.accommodations@ct.gov if you have a disability and need a communication aid or service; have limited proficiency in English and may need information in another language; or if you wish to file an ADA or Title VI discrimination complaint.



DEEP WEEKLY Fishing Report
Connecticut Department of Energy & Environmental Protection
 79 Elm Street, Hartford, CT 06106
www.ct.gov/deep/Fisheries